

Oracle Supply Planning Cloud

ORACLE[®] SUPPLY CHAIN MANAGEMENT CLOUD

KEY BUSINESS BENEFITS

- Effectively plan make-to-stock, configure-to-order, drop shipped and contract manufactured items
- Respond faster to demand changes
- Reduce inventory and obsolescence costs
- Prevent manufacturing and supply disruptions

KEY FEATURES

- Plan your global supply chain across multiple tiers
- Calculate statistical safety stock requirements
- Generate supply plans that include outsourced manufacturing and upstream suppliers
- Analyze exceptions, determine root causes and make intelligent action recommendations
- Model what-if changes to capacity, demand, supply and items
- Compare the effectiveness of alternative plans
- Release planned orders for execution
- Cancel and reschedule orders as conditions change

Supply planners typically spend half their time crafting plans that satisfy the most customers, maximize the use of resources and leverage the best sources for materials and components. They then spend the other half improvising solutions when things change. Oracle Supply Planning Cloud offers simpler, faster and better tools to bridge the gap between strategic optimization and tactical firefighting. Its global, iterative plans detect issues and intelligently cancel, reschedule and reroute global supply in near real time when needed. By rapidly simulating supply scenarios, and collaborating online to prevent future disruptions, planners can do more with less.

Plan Global Supply

Today's supply chains are complex, with multiple tiers of internal and external nodes. Your supply plans must manage a global network of in-house production and distribution facilities, as well as contract manufacturers, drop ship suppliers and outside services providers.

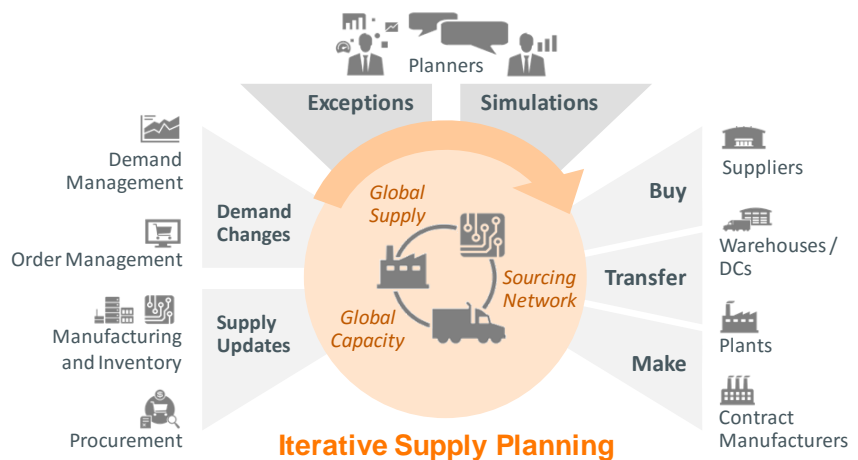


Figure 1. Quickly respond to changes in supply and demand across global networks

Oracle Supply Planning Cloud accounts for lead times, shipping/receiving calendars and capacity constraints across your extended supply chain, so you know when you can realistically meet demand. Its comprehensive network and sourcing model enables you to trade off internal vs. external production capacity, configure drop ship relationships, consolidate supply at your own facilities, or identify when a second-tier supplier's limited capacity could put demand at risk. You can choose to manage your network with a few global rules, or tailor your planning for each high-value component at a critical facility.

Generate Detailed, Executable Plans

Supply plans must accurately reflect material constraints to be executable. For example, effectivity dates on components, lot expiration dates, and inventory reservations can impact supply availability, so Oracle Supply Planning Cloud includes them in its calculations. It also accounts for any existing reservations on purchase orders, manufacturing work orders or transfer orders. Finally, to ensure consistency with production processes, Oracle Supply Planning Cloud uses manufacturing routings to determine the material and resource requirements of make-to-order supplies.

When your plans need to account for complex configure-to-order supply requirements, Oracle Supply Planning Cloud can consume configured product orders from model-level demand forecasts. It can also determine component and resource requirements based upon historical demand, calculate option-dependent lead times, and detect potential model-level supplier capacity overloads.

Supply plans don't only fulfill order demands; they also replenish buffer stock. Oracle Supply Planning Cloud manages statistical safety stock at a specified service level based on the amount of forecast error. Alternatively, you can use a days-of-cover policy, or set safety stock quantities manually when you need to.

Continuously Monitor Supply Chain Performance

Oracle Supply Planning Cloud launches with a global picture of your supply chain's performance. Its visual *Plan Summary* provides one-click access to demand, inventory and capacity plans in context, so you don't have to search and filter reams of data to begin working. You can easily change the screen layout and analytics to suit your role and planning objectives.

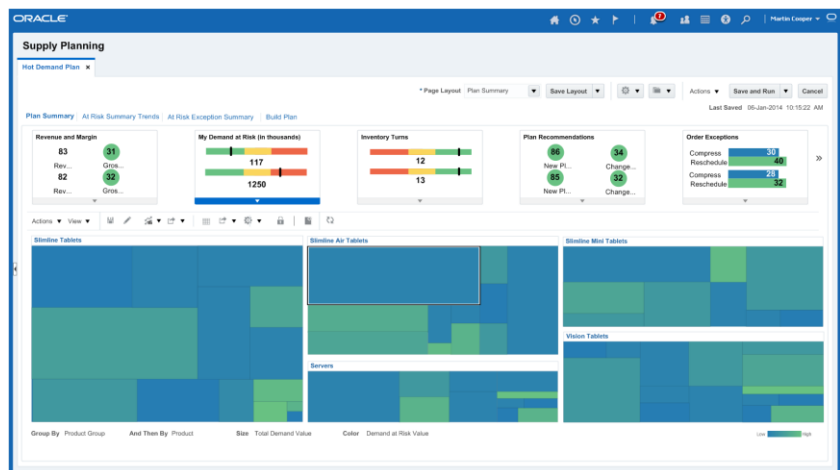


Figure 2. Visualize supply plans and performance issues at a glance

Planning issues can arise from many sources, so Oracle Supply Planning Cloud lets you navigate, analyze and update data across multiple dimensions. You can tailor supplier, organization, resource, geography and product hierarchies to match your business segments. You can also add your own custom measures to capture unique data sources, perform proprietary calculations or build alternate plans. This broad configurability helps you support your team's existing planning processes, and easily evolve to new planning practices over time.

Pre-seeded worksheets offer familiar spreadsheet-like views, as well as specialized tools to review resource utilization, pegging and master data. For example, the *Build Plan* view shows both material and resource requirements for an assembly over time. You can see the specific orders driving demand, so you can decide whether to push demand out or position supply to relieve any resource bottlenecks or material shortages.

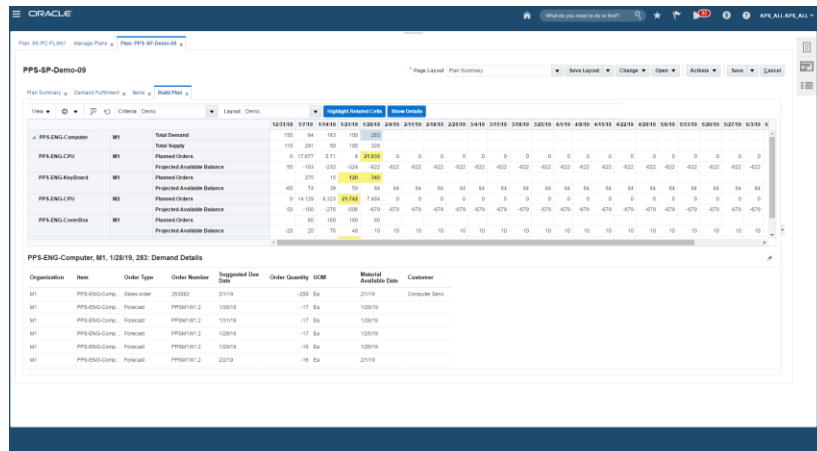


Figure 3. Use the *Build Plan* to trade off demand, capacity and supply for an assembly

Respond to Changing Business Conditions

When supply or demand changes, you need to be able to update your plans, consider alternative scenarios and work with internal organizations, contract manufacturers and suppliers to rebalance the supply chain.

Manage Exceptions

Oracle Supply Planning Cloud detects resource overloads, material shortages, order changes and other critical events so you can plan around them. You can decide which exceptions you want to apply to a particular plan, create your own exceptions, and adjust exception thresholds. You can also leverage intelligent tools such as *Demand at Risk* analysis to prioritize and resolve multiple exceptions in a single action.

Simulate Multiple Plan Scenarios

With Oracle Supply Planning Cloud, you can run multiple simulations using different assumptions. Plan simulations can evaluate the effect of an ECO or the potential supply disruption of a big new order. You can adjust sourcing; move supply and demand to different dates; update item attributes, bills of material, routings and resource attributes; and revise resource availability or supplier capacity to see the impact on your plan.

You can compare your plan simulations both at aggregate level (to see which generates more revenue, triggers fewer exceptions or improves other metrics) and at detailed level (to see how the due dates on specific orders changed). You can also save simulation changes that you want to apply across multiple plans or planning runs. Waterfall analysis compares current and previous results to drive continuous improvement.

Collaborate Internally and Externally to Refine Your Plan

Planning collaboratively yields better results, so Oracle Supply Planning Cloud links your plans with Oracle Social Cloud conversations. You can discuss delays with

RELATED PRODUCTS

Oracle Planning Central Cloud provides foundational demand and supply planning.

Oracle Demand Management Cloud predicts and models future shipments, orders and other demand signals.

Oracle Sales & Operations Cloud aligns business plans and operations across the sales, marketing, finance and supply chain organizations.

Oracle Supply Chain Collaboration Cloud shares order forecasts with suppliers and enables collaboration on supply commitments.

Oracle Order Management Cloud centralizes and standardizes your order fulfillment across multiple sales channels.

Oracle Inventory Management Cloud handles shipping, receiving, transfers and other stock management operations across facilities.

Oracle Manufacturing Cloud defines and executes production for both in-house and contract-manufactured goods.

Oracle Procurement Cloud integrates sourcing, contracts and purchasing of goods and services.

manufacturing, a proposed purchase order quantity change with the buyer, or a safety stock policy change on an item with other planners. The system links your dialog and any notes you've taken with the plan to document the reasons behind your decisions.

Collaboration with external suppliers and contract manufacturers is just as important. Oracle Supply Planning Cloud can share your plan with trading partners through Oracle Supply Chain Collaboration Cloud. Supplier commitments are available for analysis, so you can decide whether you need to identify another supply source.

Review and Release Orders for Execution

To put your plans into action, you need to send your supply order recommendations to execution systems. Oracle Supply Planning Cloud can release planned orders to procurement, inventory and manufacturing automatically, or you can control the process manually. For example, you can review the percentage of a run of assemblies that has all of its components available, and release only the quantity that's ready to build. Planned supply orders may support multiple demands, or peg to an individual demand back-to-back. A *Pegging Analysis* screen helps you see these details and prioritize supplies; for example, you can view the supplies that fulfill sales orders rather than forecasted demand.

Integration of the order release process to Oracle Cloud SCM applications is built in. If you're creating plans for on-premise ERP systems, you can also export the planned orders and changes as a file that can be custom integrated from there.

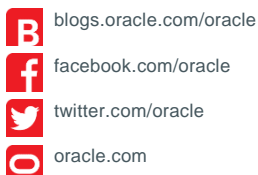
Extend your Planning Process as You See Fit

Most cloud ERP solutions only offer simplistic "one-size-fits-all" planning capabilities. Oracle Supply Planning Cloud changes the game, with comprehensive planning tools that are not only easy to use, but can evolve with your business. It's built upon Oracle Planning Central Cloud and is tightly integrated with Oracle Demand Management Cloud, so you can forecast demand and plan supply in a single user interface. It's also pre-integrated with other Oracle SCM Cloud services, so you can spend less time implementing. But since Oracle Supply Planning Cloud can plan supply for facilities that are still running on-premise ERP solutions, you don't have to move everything to the cloud at once. You can start with planning, and uplift the rest of your applications later.

Take advantage of Oracle Supply Planning Cloud's world-class simulation, collaboration, ease of use and straightforward deployment to take your planning to the next level. It's simpler, faster and better: Cloud without compromise.

CONTACT US

For more information about Oracle Supply Planning Cloud, visit oracle.com or call +1.800.ORACLE1 to speak to an Oracle representative.

**CONNECT WITH US****Integrated Cloud Applications & Platform Services**

Copyright © 2017, Oracle and/or its affiliates. All rights reserved. This document is provided for information purposes only, and the contents hereof are subject to change without notice. This document is not warranted to be error-free, nor subject to any other warranties or conditions, whether expressed orally or implied in law, including implied warranties and conditions of merchantability or fitness for a particular purpose. We specifically disclaim any liability with respect to this document, and no contractual obligations are formed either directly or indirectly by this document. This document may not be reproduced or transmitted in any form or by any means, electronic or mechanical, for any purpose, without our prior written permission.

Oracle and Java are registered trademarks of Oracle and/or its affiliates. Other names may be trademarks of their respective owners.

Intel and Intel Xeon are trademarks or registered trademarks of Intel Corporation. All SPARC trademarks are used under license and are trademarks or registered trademarks of SPARC International, Inc. AMD, Opteron, the AMD logo, and the AMD Opteron logo are trademarks or registered trademarks of Advanced Micro Devices. UNIX is a registered trademark of The Open Group. 0116